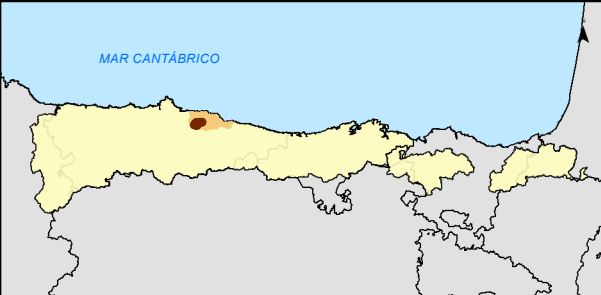
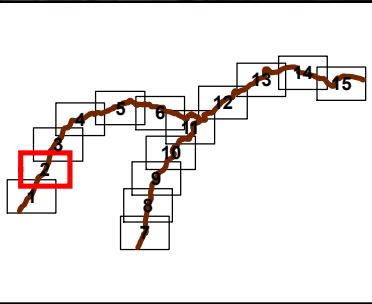
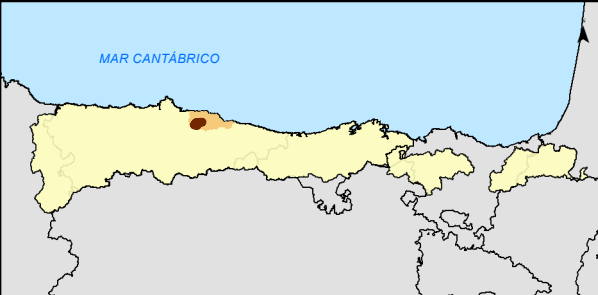
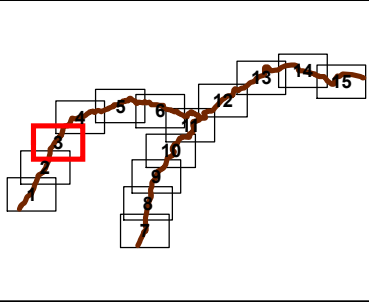


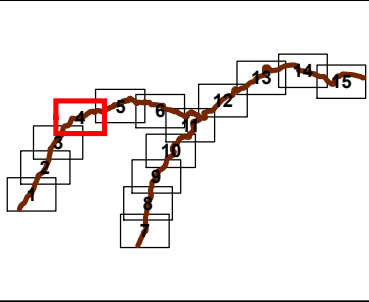
| LEYENDA ESPECÍFICA: | |
|---------------------------|------------|
| CALADO (metros) | |
| 0.0 - 0.2 | |
| 0.2 - 0.4 | |
| 0.4 - 0.6 | |
| 0.6 - 0.8 | |
| 0.8 - 1.0 | |
| 1.0 - 1.5 | |
| 1.5 - 2.0 | |
| 2.0 - 2.5 | |
| 2.5 - 3.0 | |
| 3.0 - 15.0 | |
| LEYENDA GENERAL: | |
| Cauces | |
| Núcleo urbano | |
| D.P. Marítimo - Terrestre | |
| Término municipal | |
| Ámbito de estudio | |
| Sistema de explotación | |
| Tramo de estudio | |
| 1 | Nº de hoja |



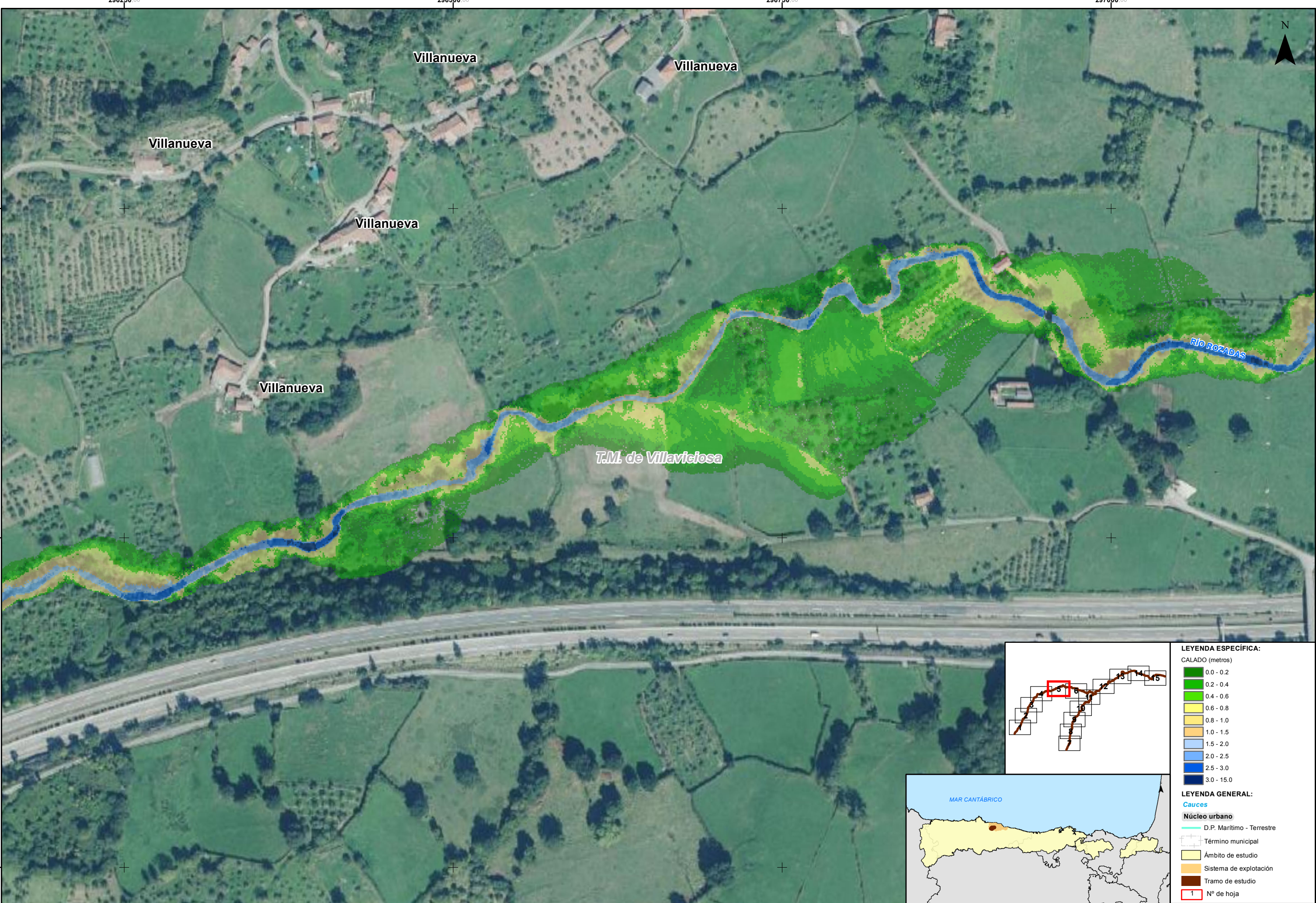
| LEYENDA ESPECÍFICA: | |
|---------------------------|------------|
| CALADO (metros) | |
| 0.0 - 0.2 | |
| 0.2 - 0.4 | |
| 0.4 - 0.6 | |
| 0.6 - 0.8 | |
| 0.8 - 1.0 | |
| 1.0 - 1.5 | |
| 1.5 - 2.0 | |
| 2.0 - 2.5 | |
| 2.5 - 3.0 | |
| 3.0 - 15.0 | |
| LEYENDA GENERAL: | |
| Cauces | |
| Núcleo urbano | |
| D.P. Marítimo - Terrestre | |
| Término municipal | |
| Ámbito de estudio | |
| Sistema de explotación | |
| Tramo de estudio | |
| 1 | Nº de hoja |

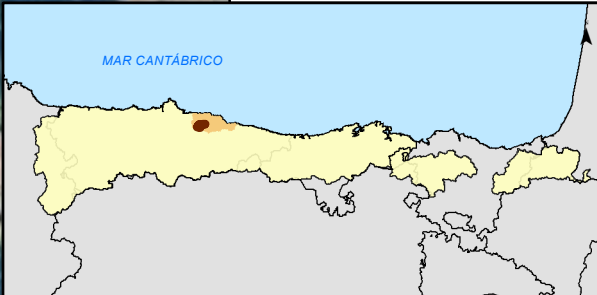
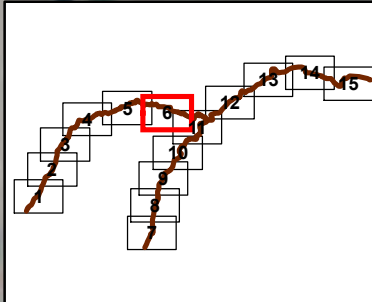
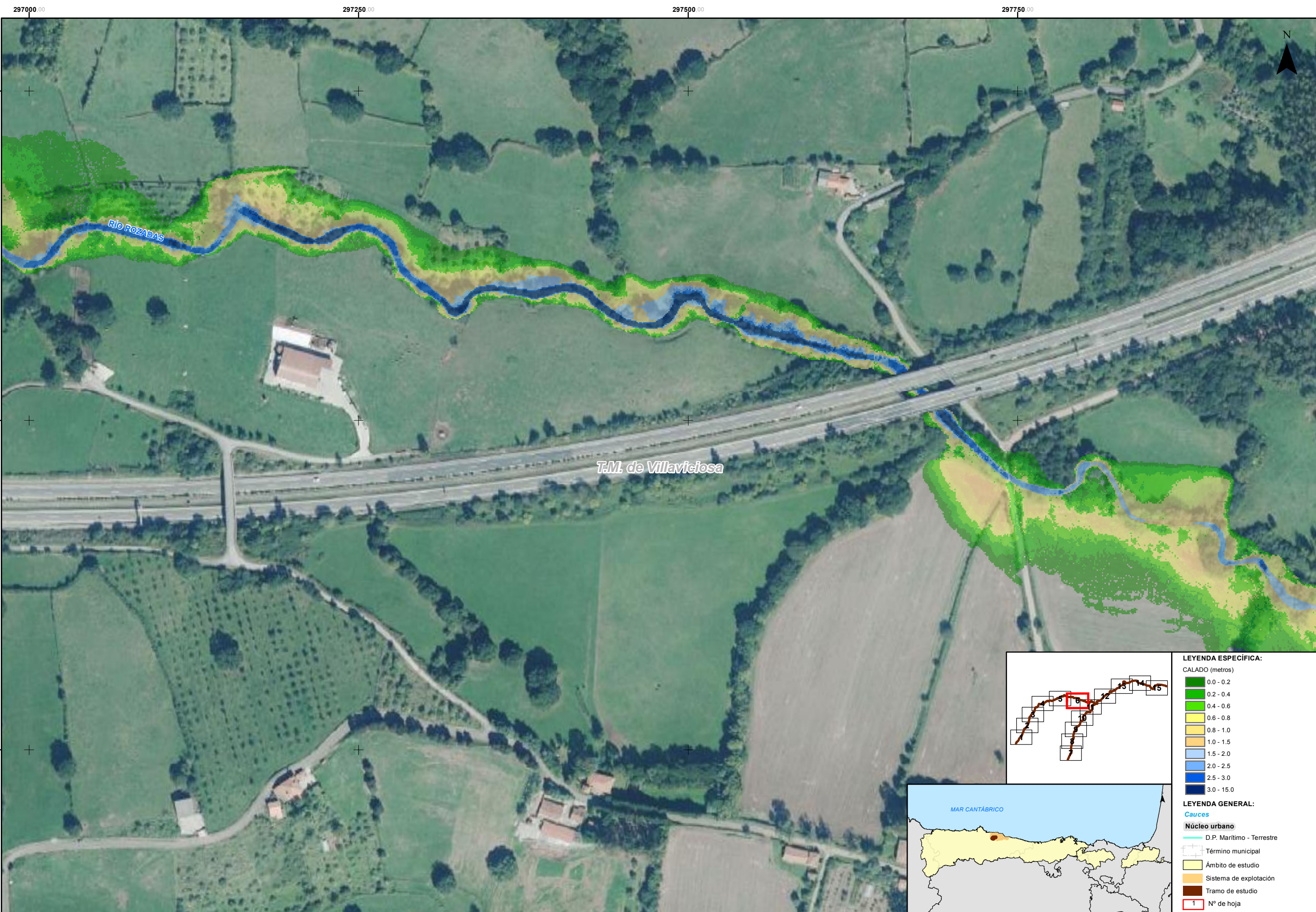


| LEYENDA ESPECÍFICA: | |
|---------------------------|------------|
| CALADO (metros) | |
| 0.0 - 0.2 | |
| 0.2 - 0.4 | |
| 0.4 - 0.6 | |
| 0.6 - 0.8 | |
| 0.8 - 1.0 | |
| 1.0 - 1.5 | |
| 1.5 - 2.0 | |
| 2.0 - 2.5 | |
| 2.5 - 3.0 | |
| 3.0 - 15.0 | |
| LEYENDA GENERAL: | |
| Cauces | |
| Núcleo urbano | |
| D.P. Marítimo - Terrestre | |
| Término municipal | |
| Ámbito de estudio | |
| Sistema de explotación | |
| Tramo de estudio | |
| 1 | Nº de hoja |

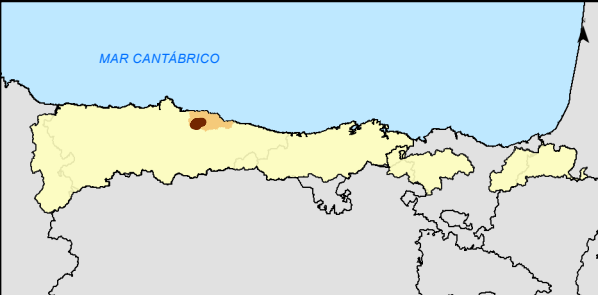
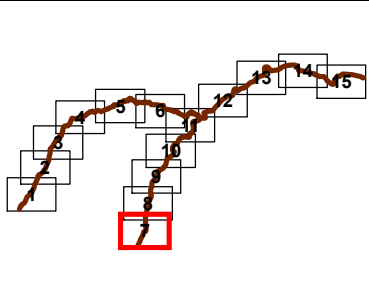
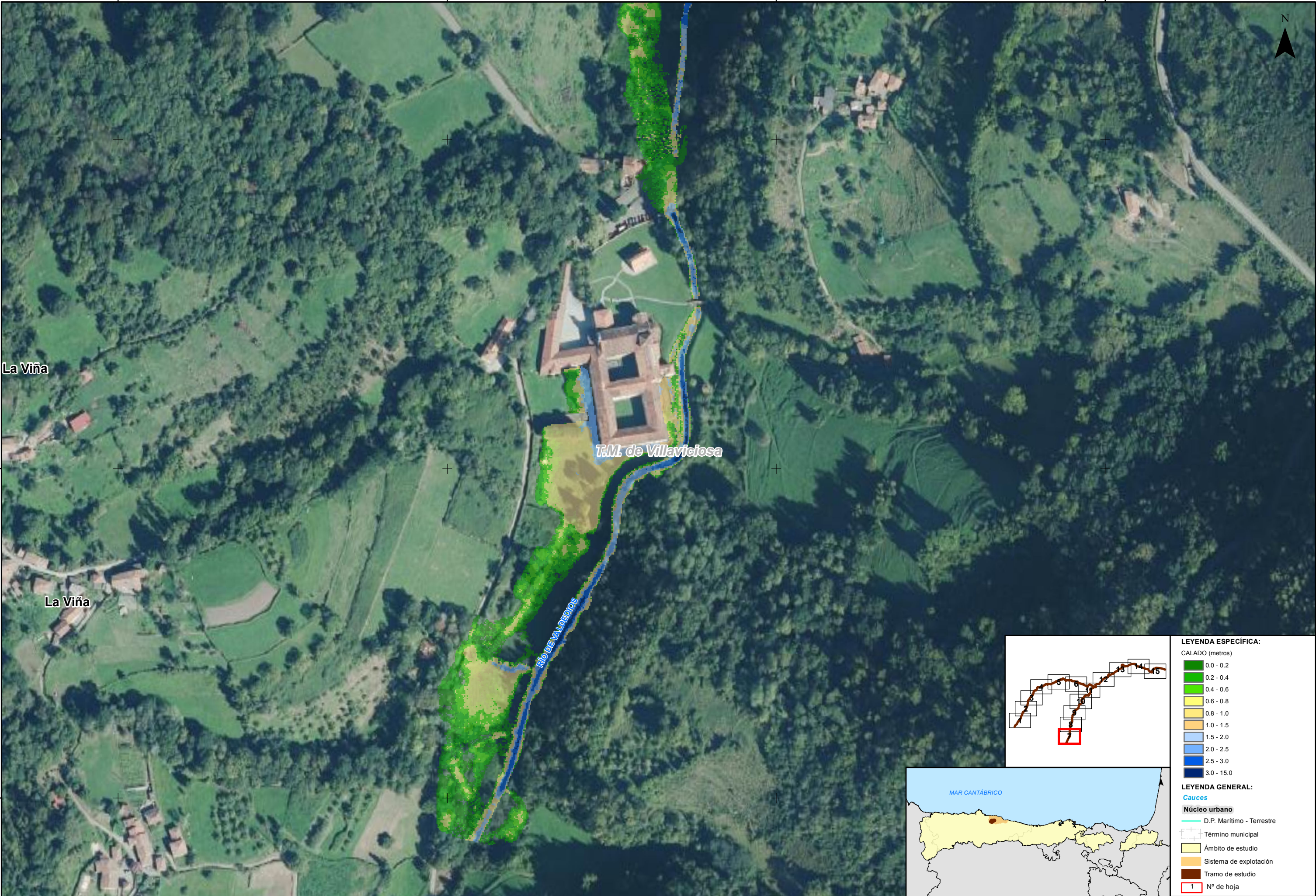


| LEYENDA ESPECÍFICA: | |
|---------------------------|------------|
| CALADO (metros) | |
| 0.0 - 0.2 | |
| 0.2 - 0.4 | |
| 0.4 - 0.6 | |
| 0.6 - 0.8 | |
| 0.8 - 1.0 | |
| 1.0 - 1.5 | |
| 1.5 - 2.0 | |
| 2.0 - 2.5 | |
| 2.5 - 3.0 | |
| 3.0 - 15.0 | |
| LEYENDA GENERAL: | |
| Cauces | |
| Núcleo urbano | |
| D.P. Marítimo - Terrestre | |
| Término municipal | |
| Ámbito de estudio | |
| Sistema de explotación | |
| Tramo de estudio | |
| 1 | Nº de hoja |

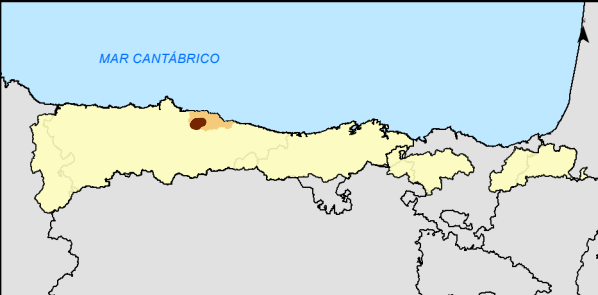
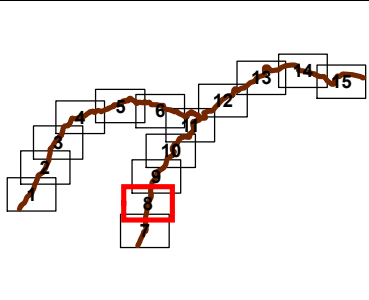
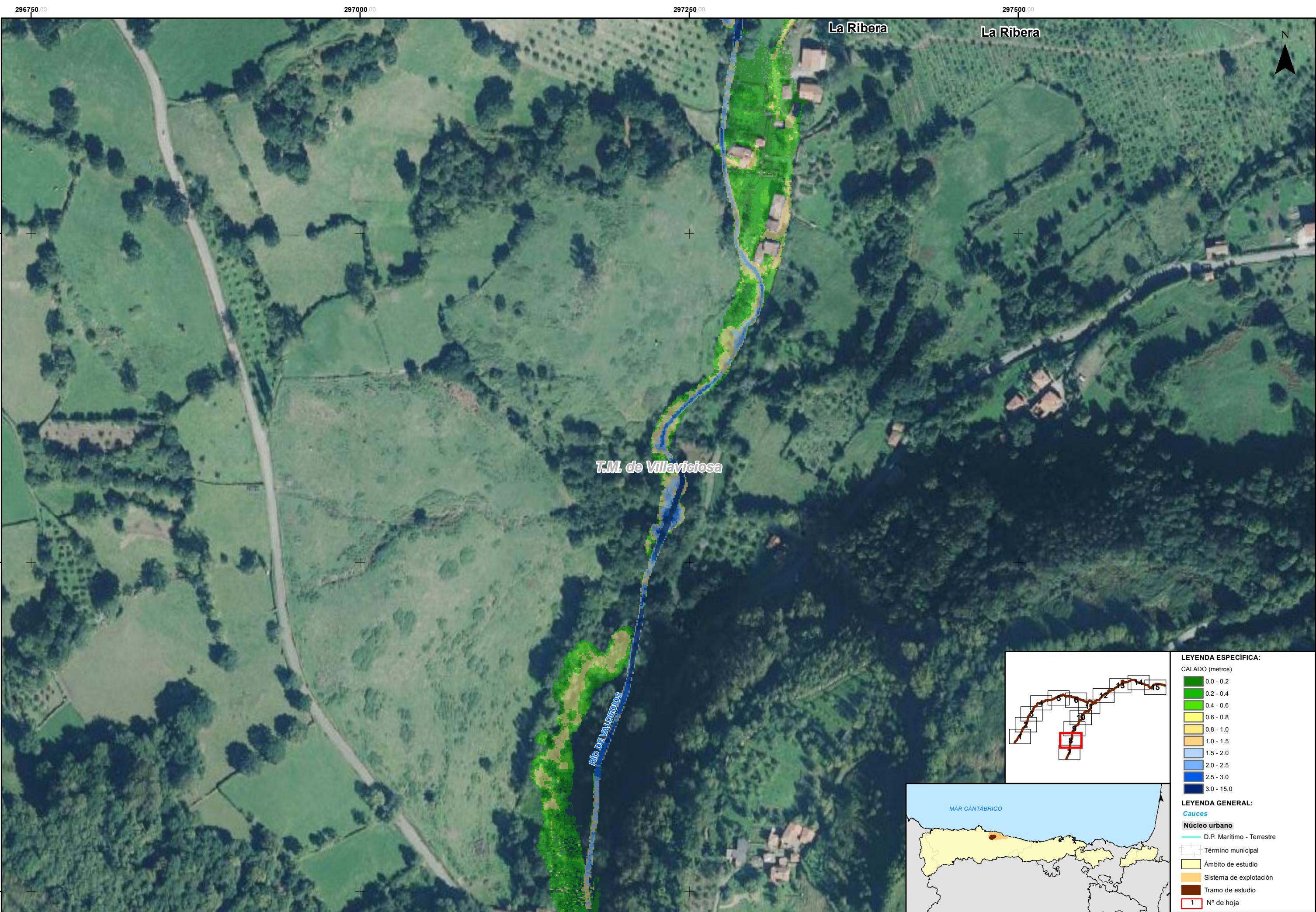




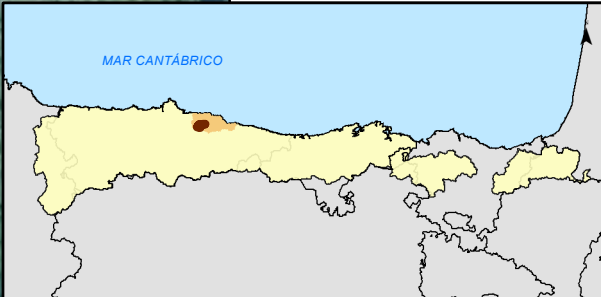
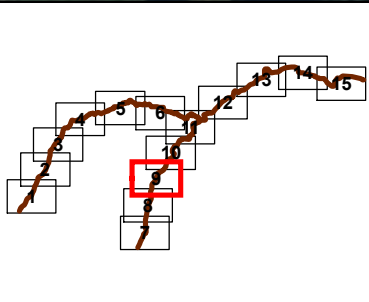
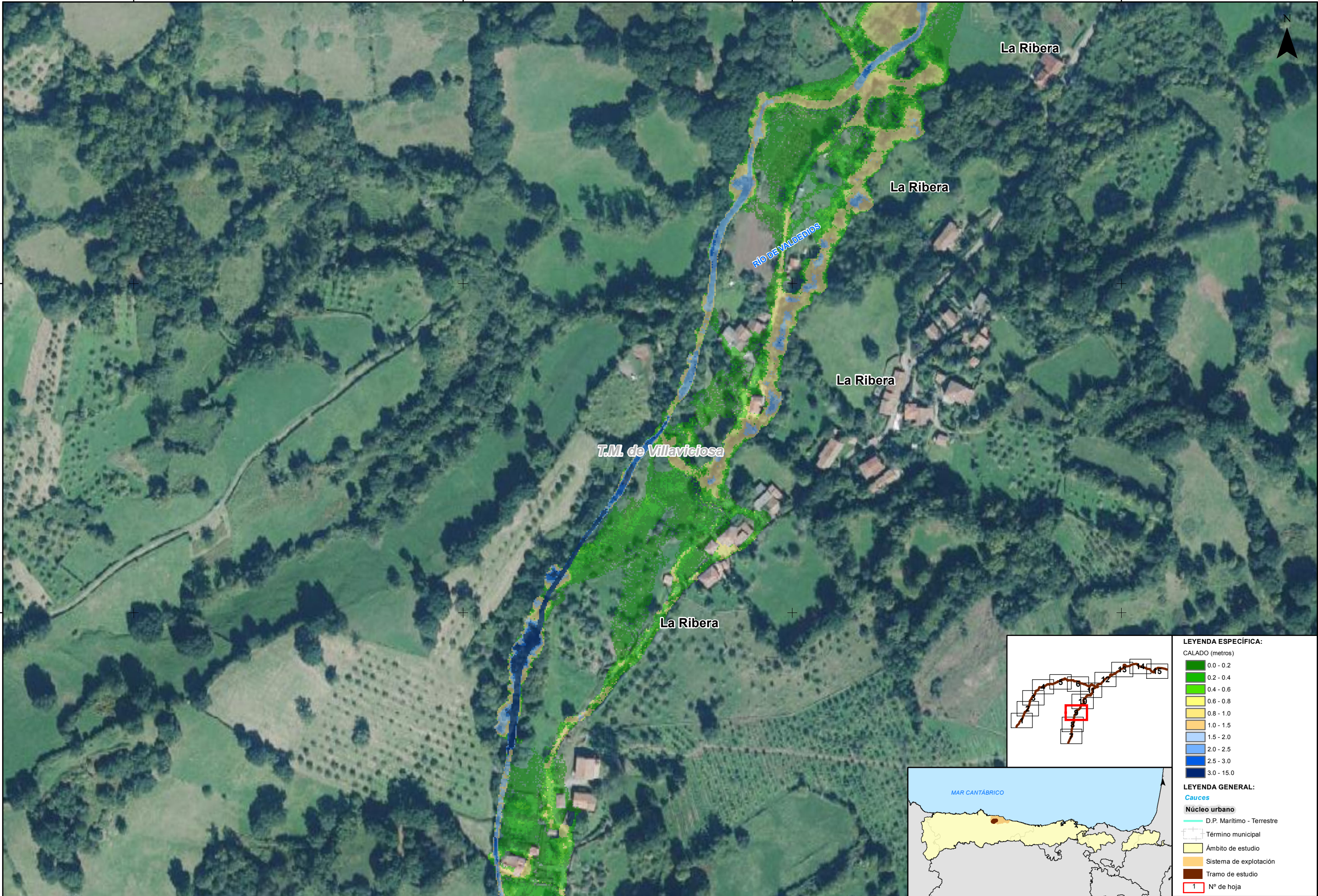
| LEYENDA ESPECÍFICA: | |
|---------------------------|------------|
| CALADO (metros) | |
| 0.0 - 0.2 | |
| 0.2 - 0.4 | |
| 0.4 - 0.6 | |
| 0.6 - 0.8 | |
| 0.8 - 1.0 | |
| 1.0 - 1.5 | |
| 1.5 - 2.0 | |
| 2.0 - 2.5 | |
| 2.5 - 3.0 | |
| 3.0 - 15.0 | |
| LEYENDA GENERAL: | |
| Cauces | |
| Núcleo urbano | |
| D.P. Marítimo - Terrestre | |
| Término municipal | |
| Ámbito de estudio | |
| Sistema de explotación | |
| Tramo de estudio | |
| 1 | Nº de hoja |



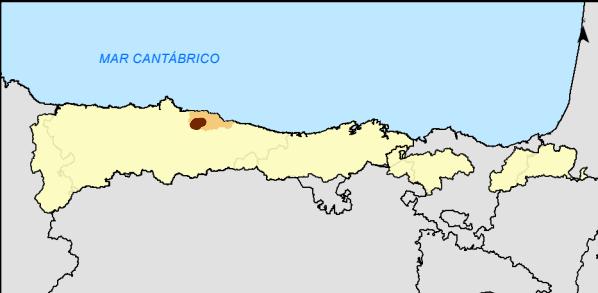
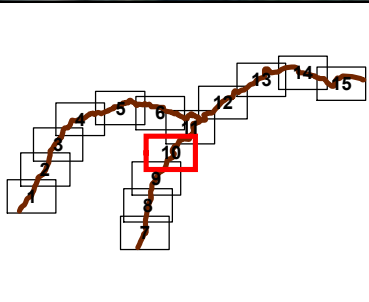
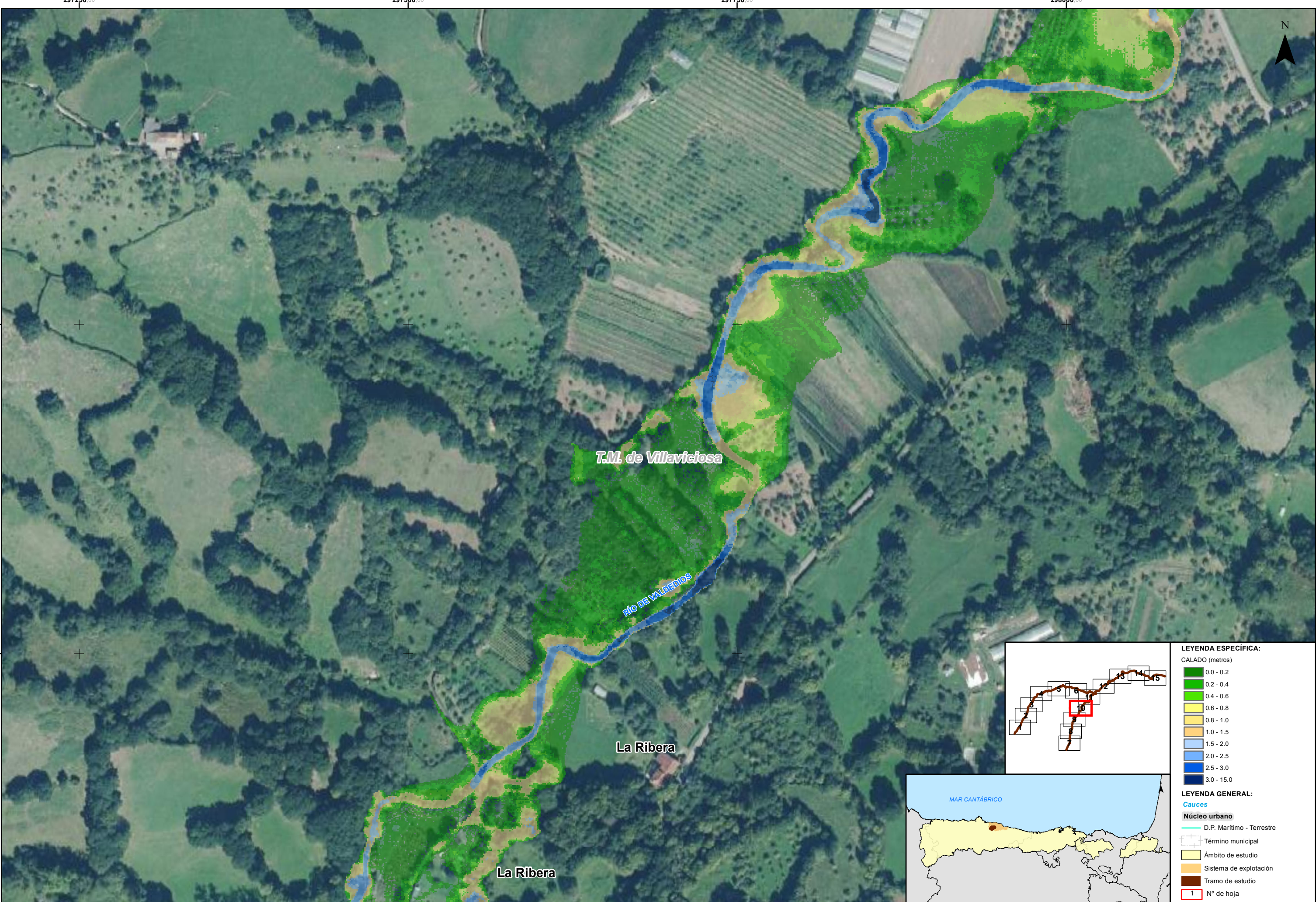
| LEYENDA ESPECÍFICA: | |
|---------------------------|------------|
| CALADO (metros) | |
| 0.0 - 0.2 | |
| 0.2 - 0.4 | |
| 0.4 - 0.6 | |
| 0.6 - 0.8 | |
| 0.8 - 1.0 | |
| 1.0 - 1.5 | |
| 1.5 - 2.0 | |
| 2.0 - 2.5 | |
| 2.5 - 3.0 | |
| 3.0 - 15.0 | |
| LEYENDA GENERAL: | |
| Cauces | |
| Núcleo urbano | |
| D.P. Marítimo - Terrestre | |
| Término municipal | |
| Ámbito de estudio | |
| Sistema de explotación | |
| Tramo de estudio | |
| 1 | Nº de hoja |



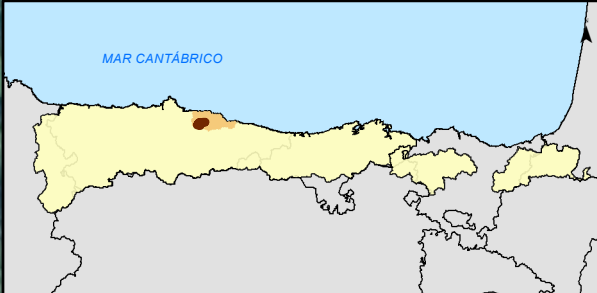
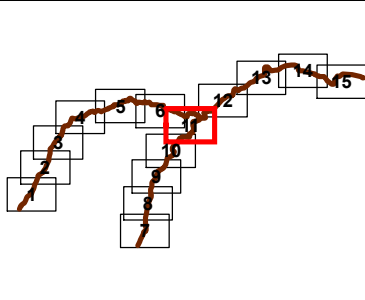
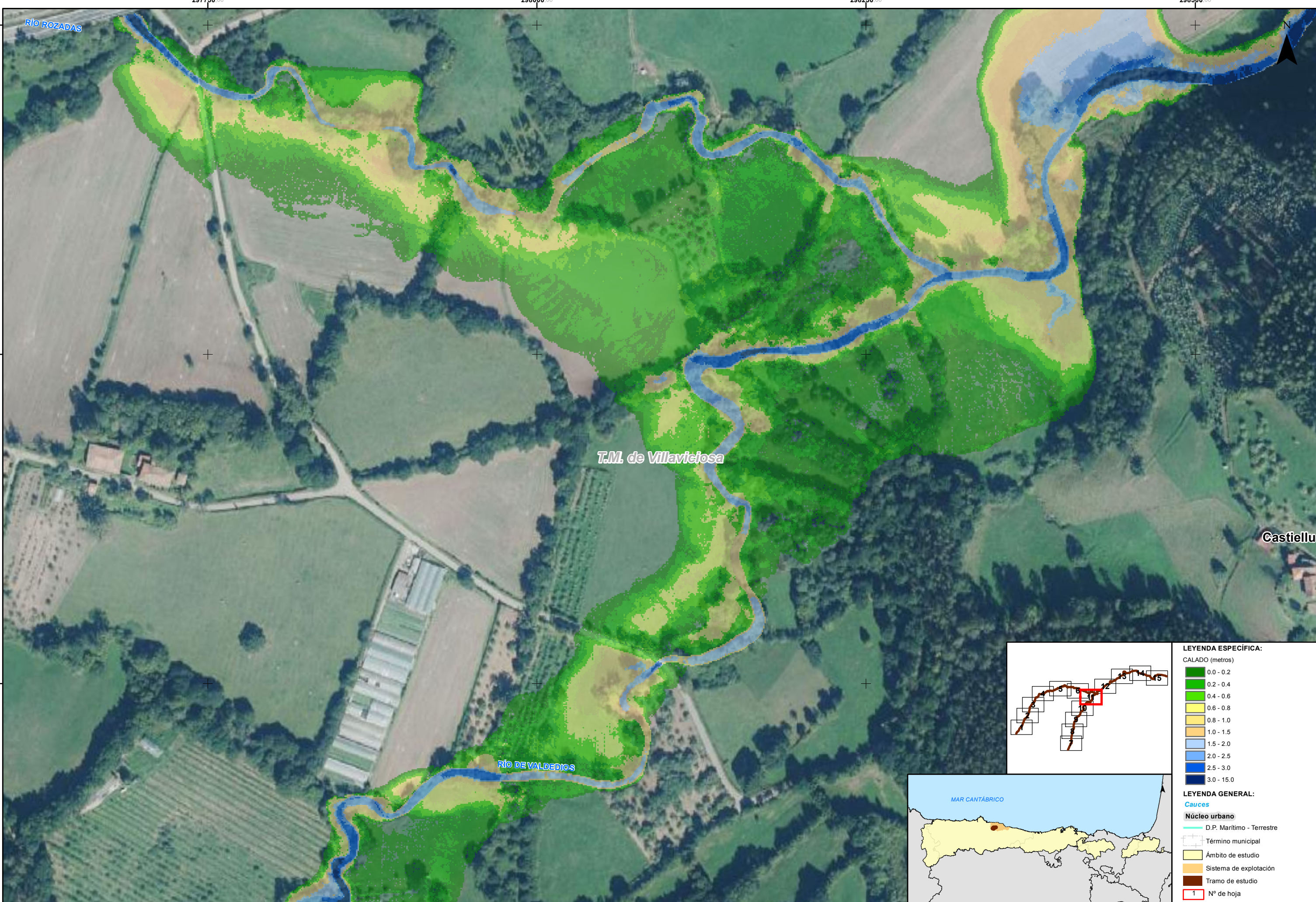
| LEYENDA ESPECÍFICA: | |
|---------------------------|------------|
| CALADO (metros) | |
| 0.0 - 0.2 | |
| 0.2 - 0.4 | |
| 0.4 - 0.6 | |
| 0.6 - 0.8 | |
| 0.8 - 1.0 | |
| 1.0 - 1.5 | |
| 1.5 - 2.0 | |
| 2.0 - 2.5 | |
| 2.5 - 3.0 | |
| 3.0 - 15.0 | |
| LEYENDA GENERAL: | |
| Cauces | |
| Núcleo urbano | |
| D.P. Marítimo - Terrestre | |
| Término municipal | |
| Ámbito de estudio | |
| Sistema de explotación | |
| Tramo de estudio | |
| 1 | Nº de hoja |



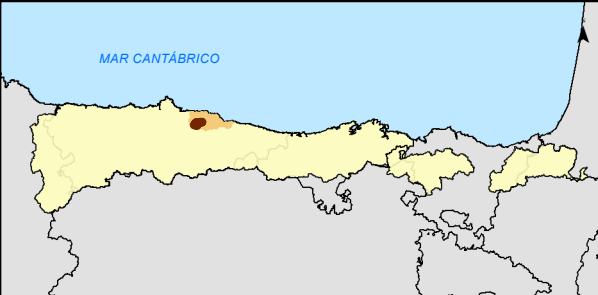
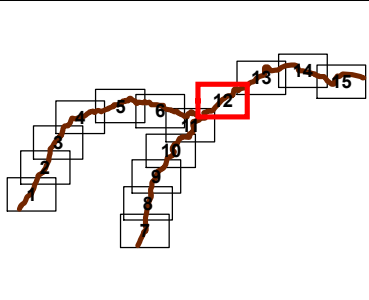
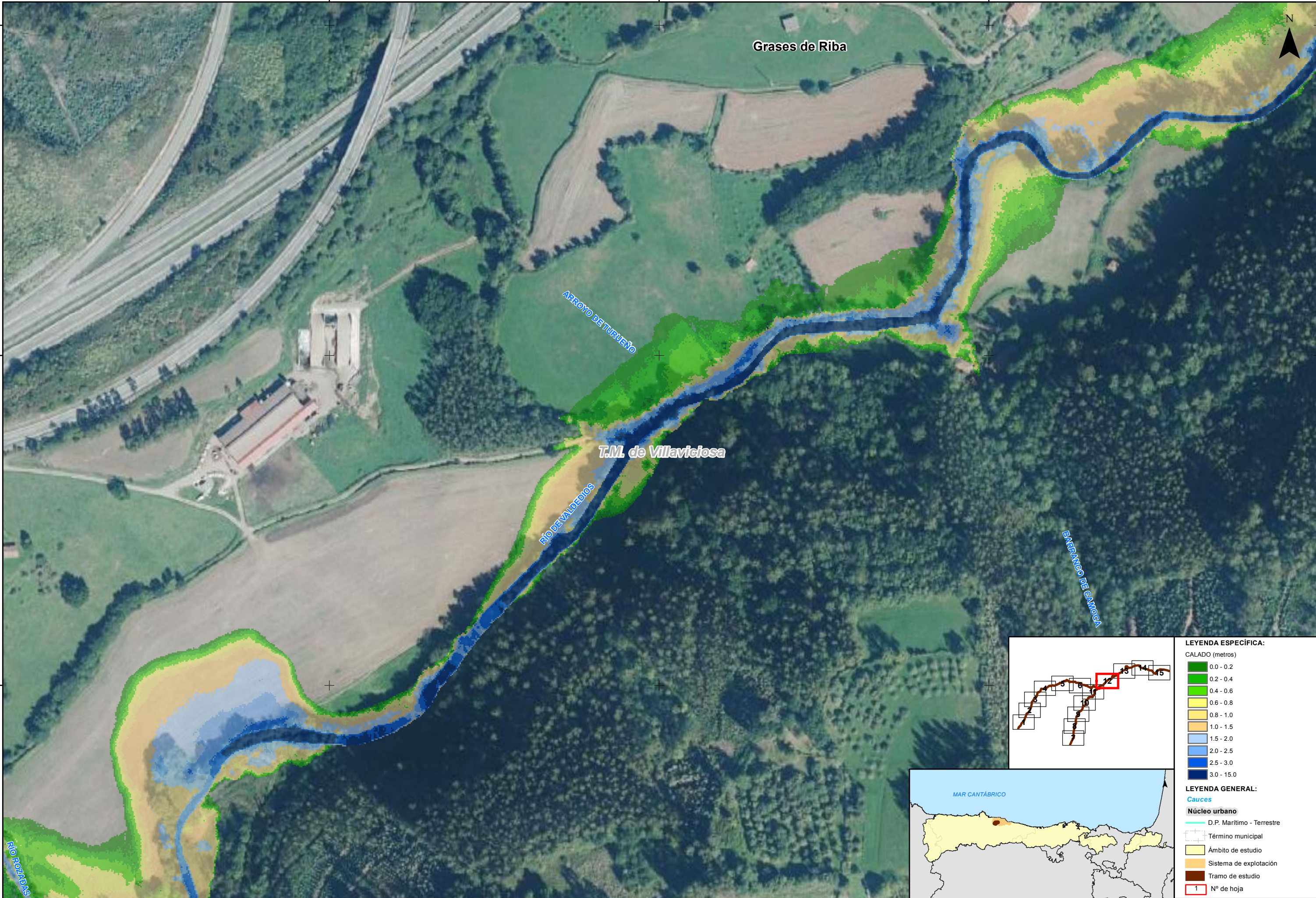
| LEYENDA ESPECÍFICA: | |
|---------------------------|------------|
| CALADO (metros) | |
| 0.0 - 0.2 | |
| 0.2 - 0.4 | |
| 0.4 - 0.6 | |
| 0.6 - 0.8 | |
| 0.8 - 1.0 | |
| 1.0 - 1.5 | |
| 1.5 - 2.0 | |
| 2.0 - 2.5 | |
| 2.5 - 3.0 | |
| 3.0 - 15.0 | |
| LEYENDA GENERAL: | |
| Cauces | |
| Núcleo urbano | |
| D.P. Marítimo - Terrestre | |
| Término municipal | |
| Ámbito de estudio | |
| Sistema de explotación | |
| Tramo de estudio | |
| 1 | Nº de hoja |



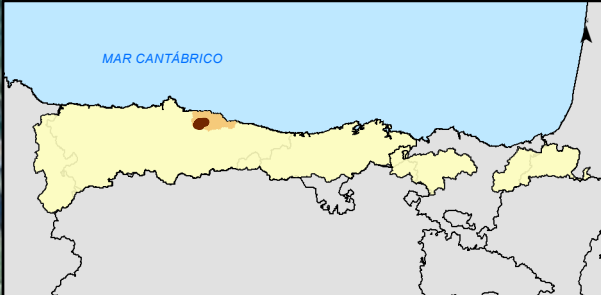
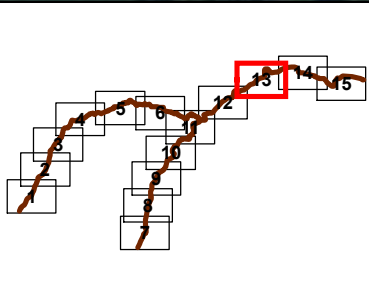
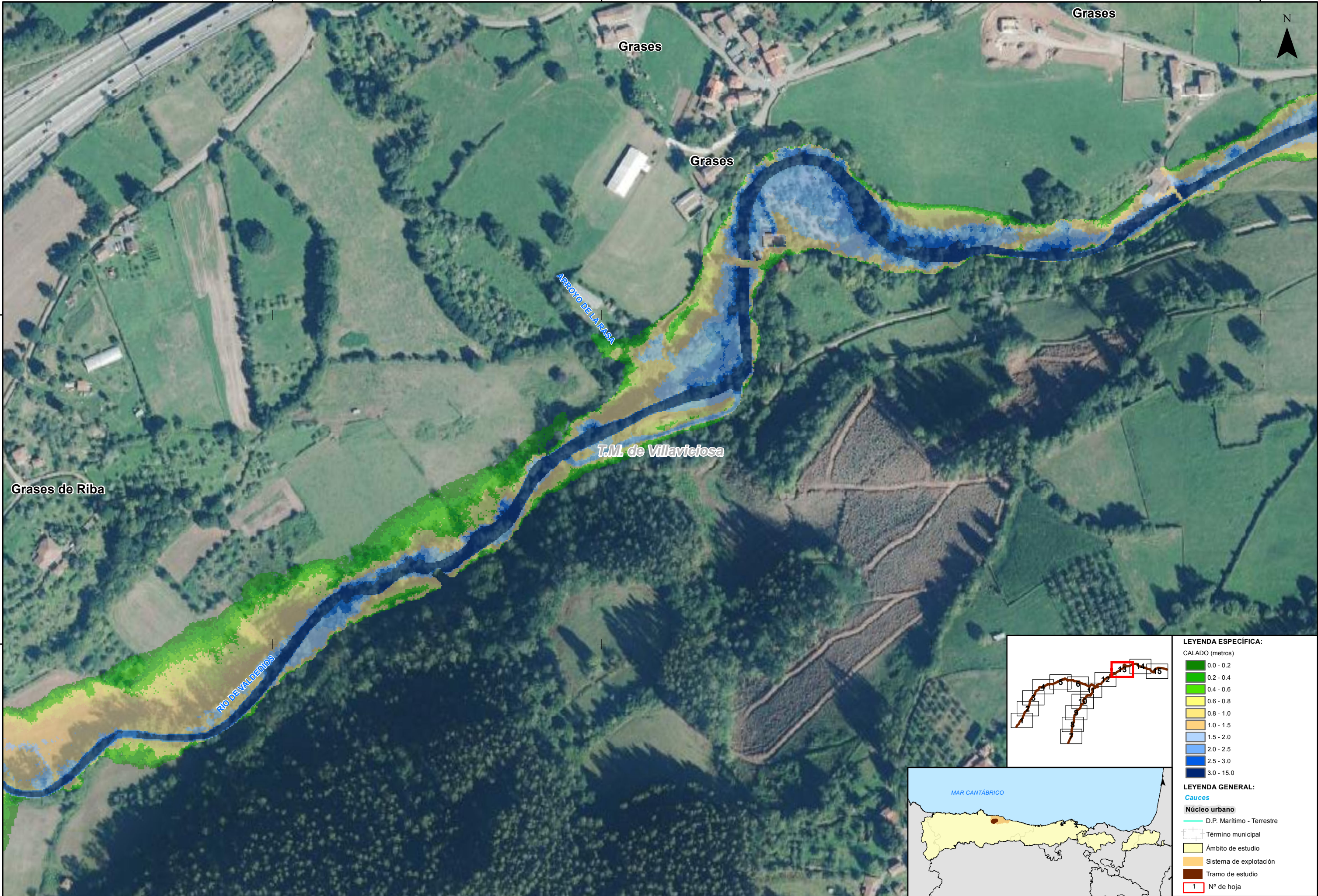
| LEYENDA ESPECÍFICA: | |
|---------------------------|------------|
| CALADO (metros) | |
| 0.0 - 0.2 | |
| 0.2 - 0.4 | |
| 0.4 - 0.6 | |
| 0.6 - 0.8 | |
| 0.8 - 1.0 | |
| 1.0 - 1.5 | |
| 1.5 - 2.0 | |
| 2.0 - 2.5 | |
| 2.5 - 3.0 | |
| 3.0 - 15.0 | |
| LEYENDA GENERAL: | |
| Cauces | |
| Núcleo urbano | |
| D.P. Marítimo - Terrestre | |
| Término municipal | |
| Ámbito de estudio | |
| Sistema de explotación | |
| Tramo de estudio | |
| 1 | Nº de hoja |



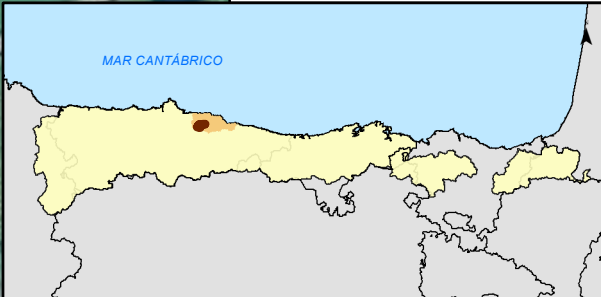
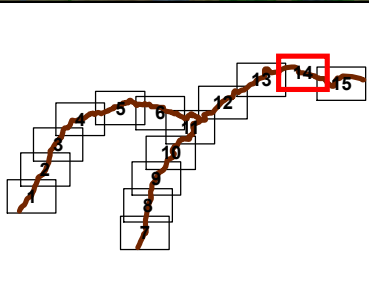
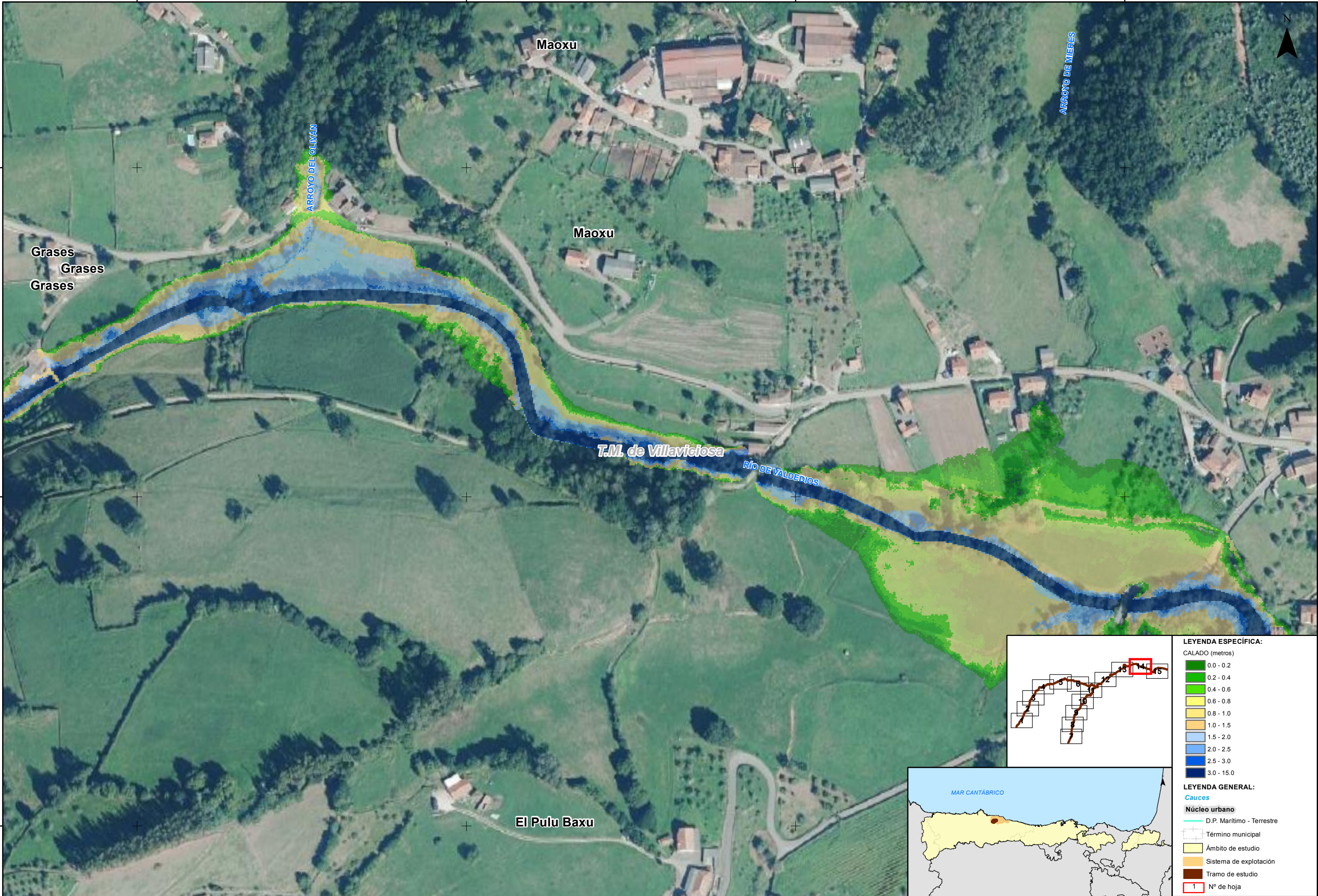
| LEYENDA ESPECÍFICA: | |
|---------------------|---------------------------|
| CALADO (metros) | |
| | 0.0 - 0.2 |
| | 0.2 - 0.4 |
| | 0.4 - 0.6 |
| | 0.6 - 0.8 |
| | 0.8 - 1.0 |
| | 1.0 - 1.5 |
| | 1.5 - 2.0 |
| | 2.0 - 2.5 |
| | 2.5 - 3.0 |
| | 3.0 - 15.0 |
| LEYENDA GENERAL: | |
| Cauces | |
| | D.P. Marítimo - Terrestre |
| | Término municipal |
| | Ámbito de estudio |
| | Sistema de explotación |
| | Tramo de estudio |
| | Nº de hoja |



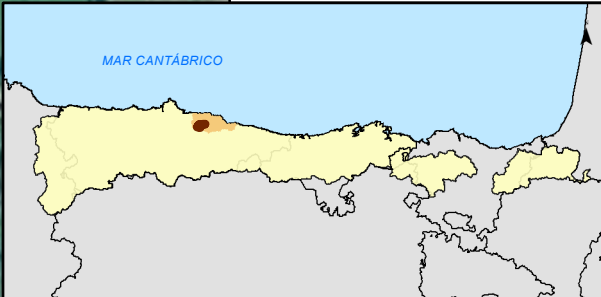
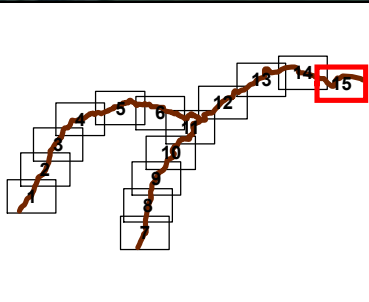
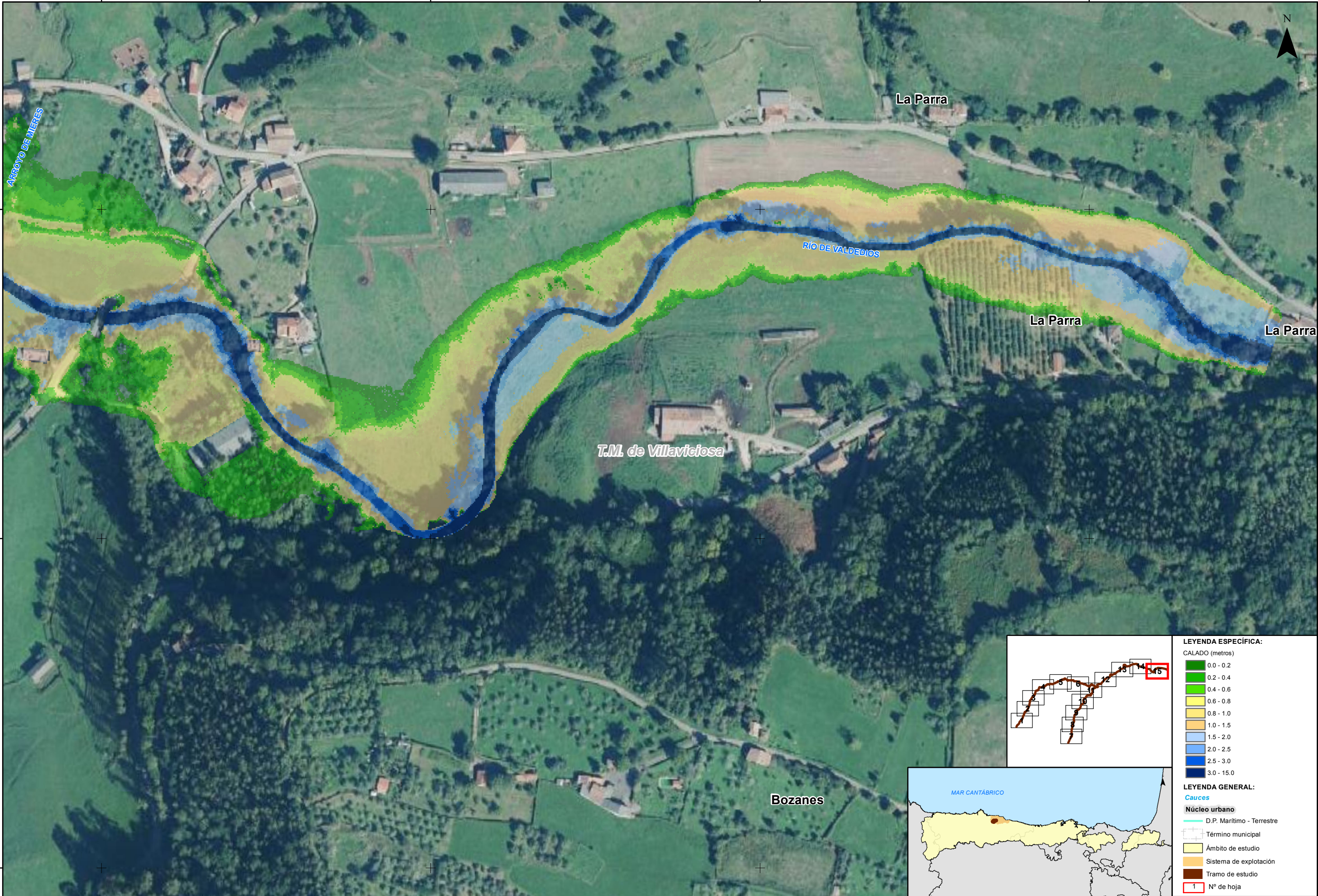
| LEYENDA ESPECÍFICA: | |
|---------------------|---------------------------|
| CALADO (metros) | |
| | 0.0 - 0.2 |
| | 0.2 - 0.4 |
| | 0.4 - 0.6 |
| | 0.6 - 0.8 |
| | 0.8 - 1.0 |
| | 1.0 - 1.5 |
| | 1.5 - 2.0 |
| | 2.0 - 2.5 |
| | 2.5 - 3.0 |
| | 3.0 - 15.0 |
| LEYENDA GENERAL: | |
| Cauces | |
| | D.P. Marítimo - Terrestre |
| | Término municipal |
| | Ámbito de estudio |
| | Sistema de explotación |
| | Tramo de estudio |
| | Nº de hoja |
| 1 | |



| LEYENDA ESPECÍFICA: | |
|---------------------------|--|
| CALADO (metros) | |
| 0.0 - 0.2 | |
| 0.2 - 0.4 | |
| 0.4 - 0.6 | |
| 0.6 - 0.8 | |
| 0.8 - 1.0 | |
| 1.0 - 1.5 | |
| 1.5 - 2.0 | |
| 2.0 - 2.5 | |
| 2.5 - 3.0 | |
| 3.0 - 15.0 | |
| LEYENDA GENERAL: | |
| Cauces | |
| Núcleo urbano | |
| D.P. Marítimo - Terrestre | |
| Término municipal | |
| Ámbito de estudio | |
| Sistema de explotación | |
| Tramo de estudio | |
| Nº de hoja | |



| LEYENDA ESPECÍFICA: | |
|---------------------------|------------|
| CALADO (metros) | |
| 0.0 - 0.2 | |
| 0.2 - 0.4 | |
| 0.4 - 0.6 | |
| 0.6 - 0.8 | |
| 0.8 - 1.0 | |
| 1.0 - 1.5 | |
| 1.5 - 2.0 | |
| 2.0 - 2.5 | |
| 2.5 - 3.0 | |
| 3.0 - 15.0 | |
| LEYENDA GENERAL: | |
| Cauces | |
| Núcleo urbano | |
| D.P. Marítimo - Terrestre | |
| Término municipal | |
| Ámbito de estudio | |
| Sistema de explotación | |
| Tramo de estudio | |
| 1 | Nº de hoja |



| LEYENDA ESPECÍFICA: | |
|---------------------|---------------------------|
| CALADO (metros) | |
| | 0.0 - 0.2 |
| | 0.2 - 0.4 |
| | 0.4 - 0.6 |
| | 0.6 - 0.8 |
| | 0.8 - 1.0 |
| | 1.0 - 1.5 |
| | 1.5 - 2.0 |
| | 2.0 - 2.5 |
| | 2.5 - 3.0 |
| | 3.0 - 15.0 |
| LEYENDA GENERAL: | |
| Cauces | |
| | D.P. Marítimo - Terrestre |
| | Término municipal |
| | Ámbito de estudio |
| | Sistema de explotación |
| | Tramo de estudio |
| | Nº de hoja |