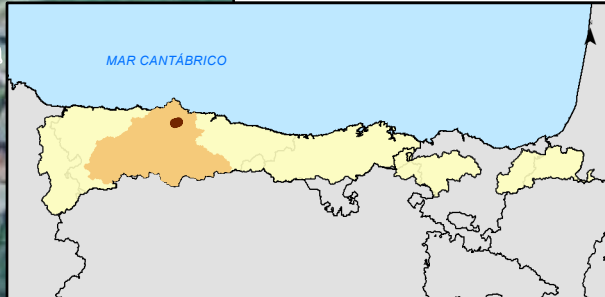
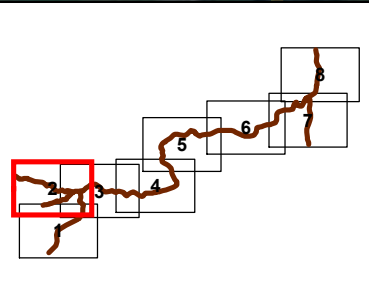


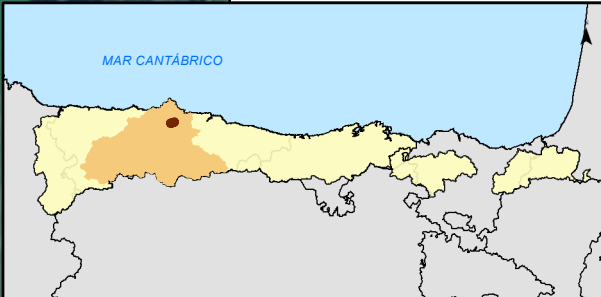
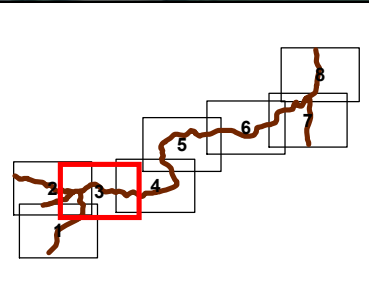
| LEYENDA ESPECÍFICA: |                           |
|---------------------|---------------------------|
| CALADO (metros)     |                           |
|                     | 0.0 - 0.2                 |
|                     | 0.2 - 0.4                 |
|                     | 0.4 - 0.6                 |
|                     | 0.6 - 0.8                 |
|                     | 0.8 - 1.0                 |
|                     | 1.0 - 1.5                 |
|                     | 1.5 - 2.0                 |
|                     | 2.0 - 2.5                 |
|                     | 2.5 - 3.0                 |
|                     | 3.0 - 15.0                |
| LEYENDA GENERAL:    |                           |
| <b>Cauces</b>       |                           |
|                     | D.P. Marítimo - Terrestre |
|                     | Término municipal         |
|                     | Ámbito de estudio         |
|                     | Sistema de explotación    |
|                     | Tramo de estudio          |
|                     | Nº de hoja                |





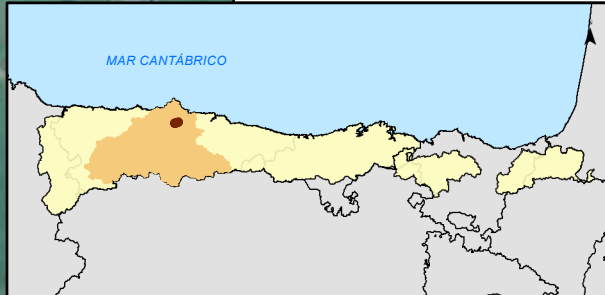
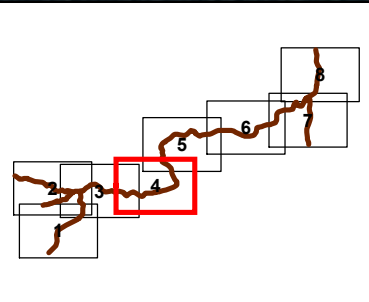
| LEYENDA ESPECÍFICA:       |            |
|---------------------------|------------|
| CALADO (metros)           |            |
| 0.0 - 0.2                 |            |
| 0.2 - 0.4                 |            |
| 0.4 - 0.6                 |            |
| 0.6 - 0.8                 |            |
| 0.8 - 1.0                 |            |
| 1.0 - 1.5                 |            |
| 1.5 - 2.0                 |            |
| 2.0 - 2.5                 |            |
| 2.5 - 3.0                 |            |
| 3.0 - 15.0                |            |
| LEYENDA GENERAL:          |            |
| Cauces                    |            |
| Núcleo urbano             |            |
| D.P. Marítimo - Terrestre |            |
| Término municipal         |            |
| Ámbito de estudio         |            |
| Sistema de explotación    |            |
| Tramo de estudio          |            |
| 1                         | Nº de hoja |





| LEYENDA ESPECÍFICA:       |  |
|---------------------------|--|
| CALADO (metros)           |  |
| 0.0 - 0.2                 |  |
| 0.2 - 0.4                 |  |
| 0.4 - 0.6                 |  |
| 0.6 - 0.8                 |  |
| 0.8 - 1.0                 |  |
| 1.0 - 1.5                 |  |
| 1.5 - 2.0                 |  |
| 2.0 - 2.5                 |  |
| 2.5 - 3.0                 |  |
| 3.0 - 15.0                |  |
| LEYENDA GENERAL:          |  |
| Cauces                    |  |
| D.P. Marítimo - Terrestre |  |
| Término municipal         |  |
| Ámbito de estudio         |  |
| Sistema de explotación    |  |
| Tramo de estudio          |  |
| Nº de hoja                |  |



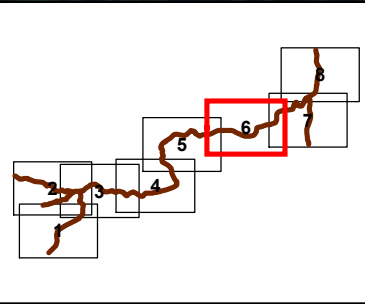
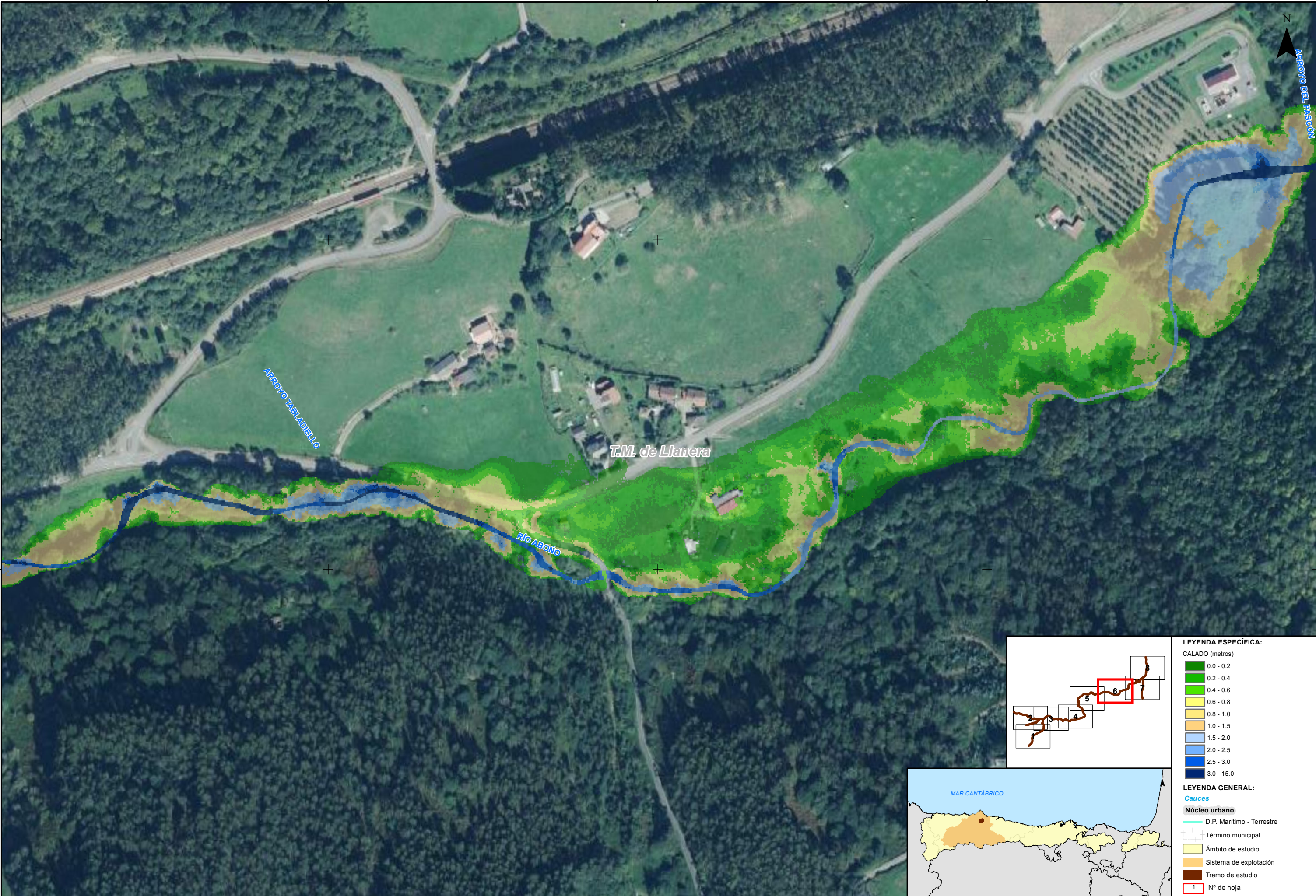


| LEYENDA ESPECÍFICA: |                           |
|---------------------|---------------------------|
| CALADO (metros)     |                           |
|                     | 0.0 - 0.2                 |
|                     | 0.2 - 0.4                 |
|                     | 0.4 - 0.6                 |
|                     | 0.6 - 0.8                 |
|                     | 0.8 - 1.0                 |
|                     | 1.0 - 1.5                 |
|                     | 1.5 - 2.0                 |
|                     | 2.0 - 2.5                 |
|                     | 2.5 - 3.0                 |
|                     | 3.0 - 15.0                |
| LEYENDA GENERAL:    |                           |
| <b>Cauces</b>       |                           |
|                     | D.P. Marítimo - Terrestre |
|                     | Término municipal         |
|                     | Ámbito de estudio         |
|                     | Sistema de explotación    |
|                     | Tramo de estudio          |
|                     | 1 N° de hoja              |



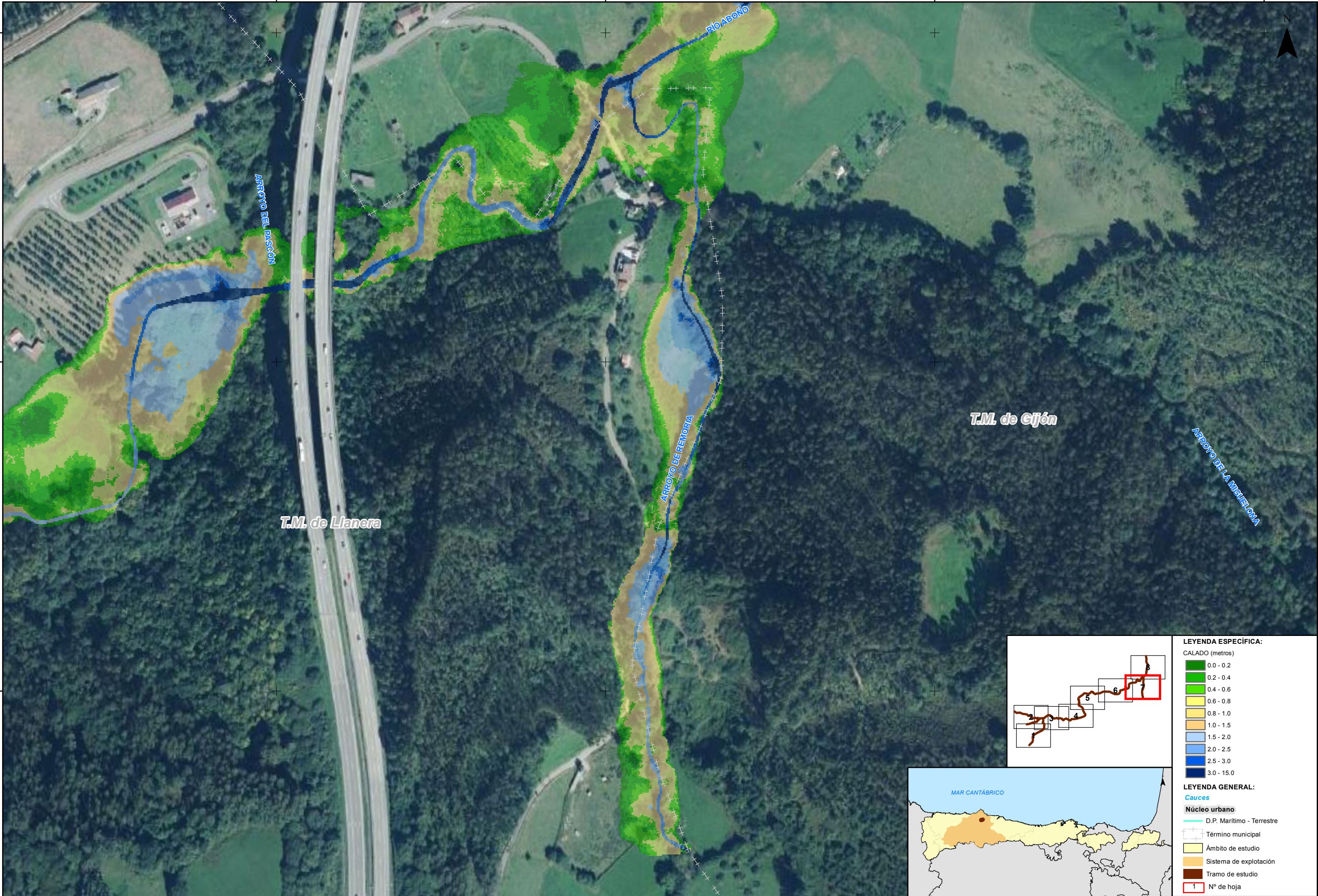




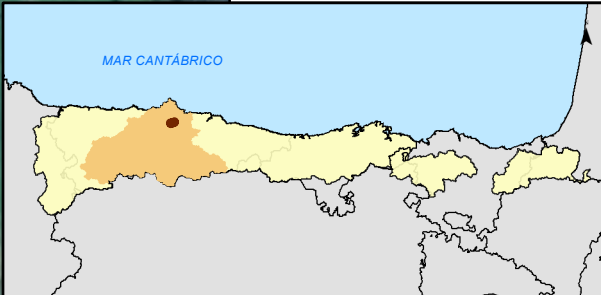
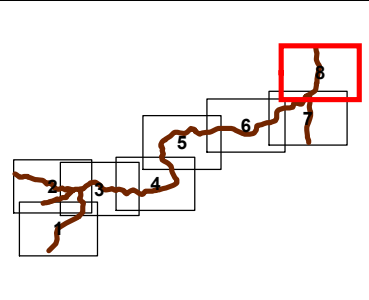
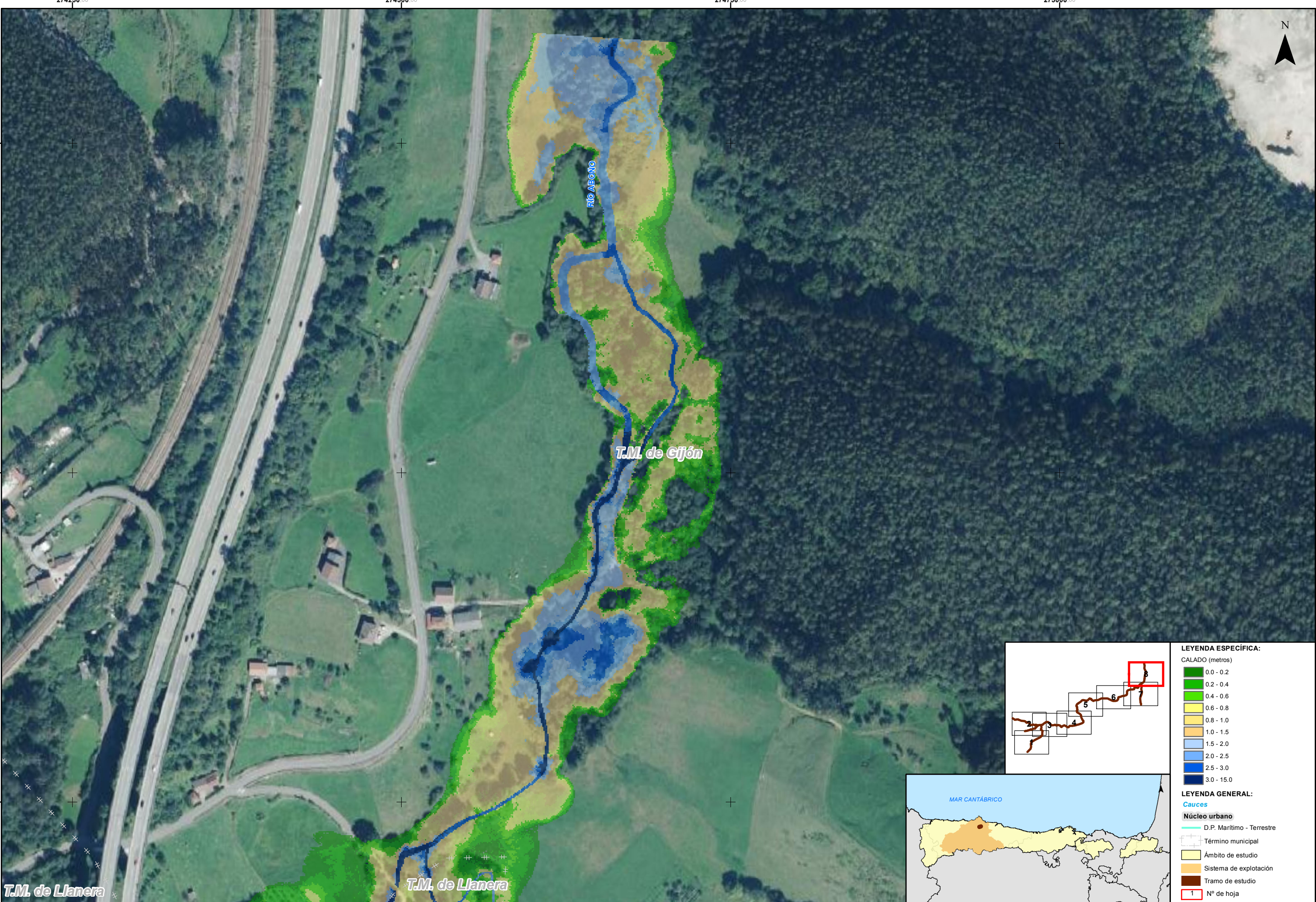


| LEYENDA ESPECÍFICA:       |            |
|---------------------------|------------|
| CALADO (metros)           |            |
| 0.0 - 0.2                 |            |
| 0.2 - 0.4                 |            |
| 0.4 - 0.6                 |            |
| 0.6 - 0.8                 |            |
| 0.8 - 1.0                 |            |
| 1.0 - 1.5                 |            |
| 1.5 - 2.0                 |            |
| 2.0 - 2.5                 |            |
| 2.5 - 3.0                 |            |
| 3.0 - 15.0                |            |
| LEYENDA GENERAL:          |            |
| Cauces                    |            |
| Núcleo urbano             |            |
| D.P. Marítimo - Terrestre |            |
| Término municipal         |            |
| Ámbito de estudio         |            |
| Sistema de explotación    |            |
| Tramo de estudio          |            |
| 1                         | Nº de hoja |









| LEYENDA ESPECÍFICA: |                           |
|---------------------|---------------------------|
| CALADO (metros)     |                           |
|                     | 0.0 - 0.2                 |
|                     | 0.2 - 0.4                 |
|                     | 0.4 - 0.6                 |
|                     | 0.6 - 0.8                 |
|                     | 0.8 - 1.0                 |
|                     | 1.0 - 1.5                 |
|                     | 1.5 - 2.0                 |
|                     | 2.0 - 2.5                 |
|                     | 2.5 - 3.0                 |
|                     | 3.0 - 15.0                |
| LEYENDA GENERAL:    |                           |
| Cauces              |                           |
|                     | D.P. Marítimo - Terrestre |
|                     | Término municipal         |
|                     | Ámbito de estudio         |
|                     | Sistema de explotación    |
|                     | Tramo de estudio          |
|                     | Nº de hoja                |