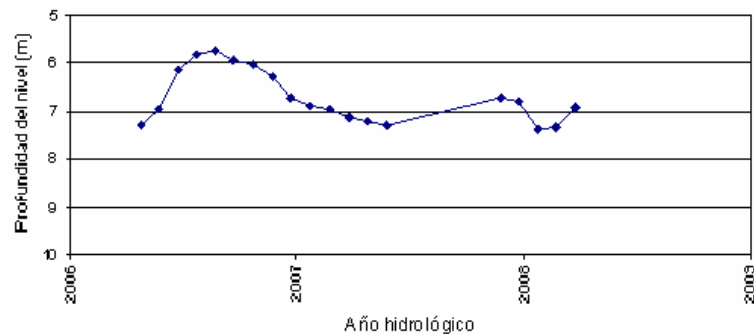


APÉNDICE 8.7. RESULTADOS DE LA EVALUACIÓN DEL POTENCIAL ECOLÓGICO EN EMBALSES

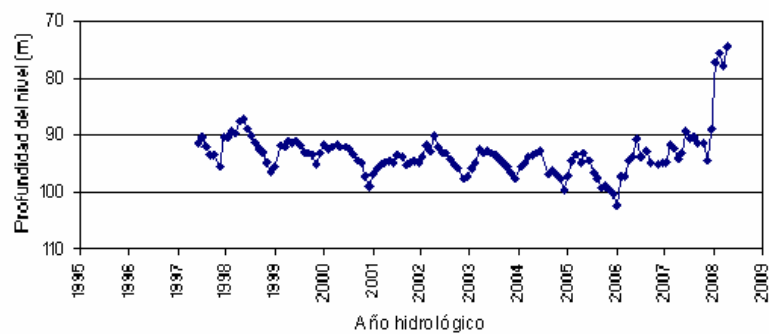
Parte española de la Demarcación Hidrográfica
del Cantábrico Oriental.
Ámbito de competencias del Estado

Junio de 2013

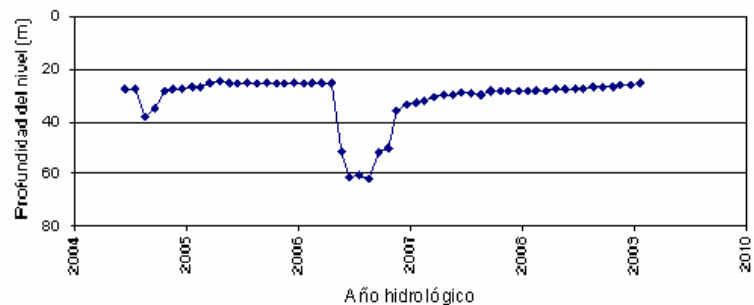
Etxano (013.001)
013.001.001 (Cota 217 m.s.n.m.)



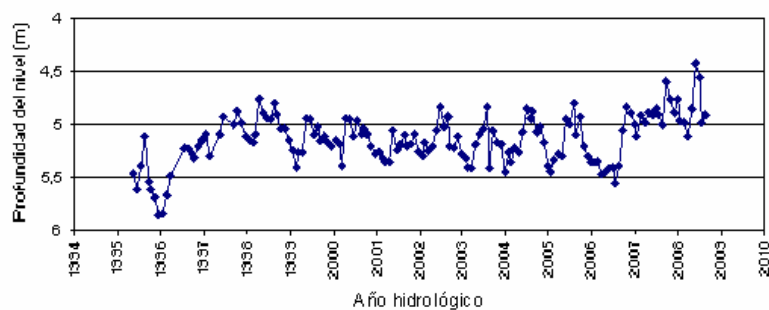
Oiz (013.002)
013.002.002 (Cota 573 m.s.n.m.)



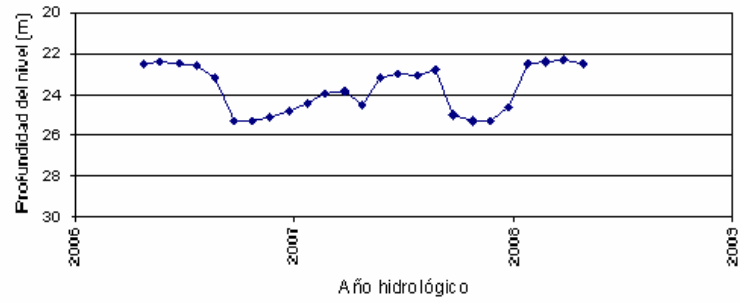
Oiz (013.002)
013.002.001 (Cota 276 m.s.n.m.)



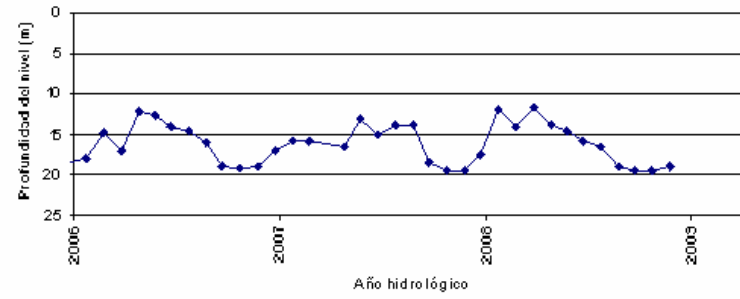
Aramatz (013.004)
013.004.002 (Cota 130 m.s.n.m.)



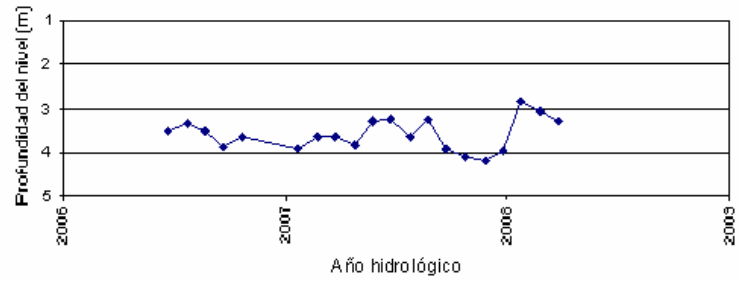
Mena-Orduña (013.006)
013.006.001 (Cota 332 ms.n.m.)



Salvada (013.007)
Osma C- SP 14 (Cota 687 ms.n.m.)



Andeain (013.008)
SP-17 (Cota 6 ms.n.m.)



Tolosa (013.009)
013.009.001 (Cota 295 ms.n.m.)

